

WHITERIP

Professional Printing Software

8

HELP FIRST START



GETTING STARTED GUIDE FOR WHITERIP

This comprehensive guide provides step-by-step instructions on the installation and configuration of WhiteRIP, a printing software. It covers all critical aspects, from starting the installation to selecting the color profile.

Insertion of the HASP Key:

The first key point to keep in mind is the insertion of the purple HASP key. This device is essential for the activation and proper functioning of WhiteRIP.

Make sure to insert the key into your computer before proceeding with the installation.



Installation Startup:

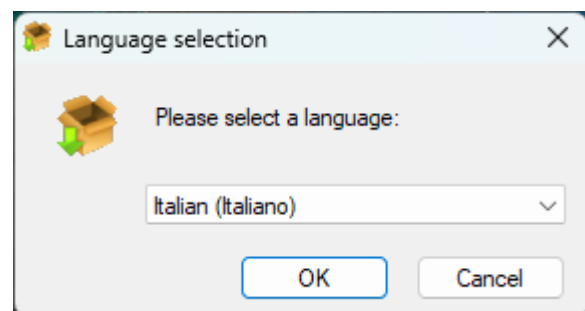
To initiate the WhiteRIP installation process, you need to run the 'Setup_WhiteRIP.exe' file as an administrator on your computer.

This step is crucial to ensure that the installation proceeds smoothly and with the appropriate permissions.

Language Selection:

At the beginning of the installation process, you will be prompted to select your preferred language from the list of available options.

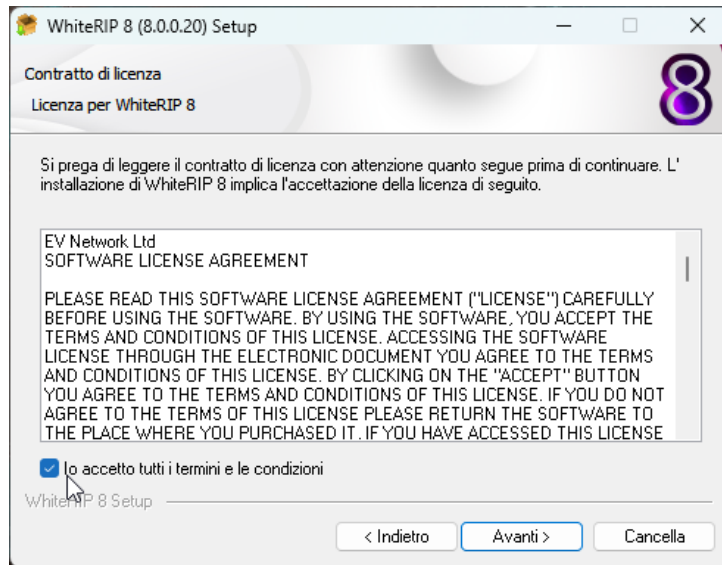
If your language is not included in the list, you can refer to the 'Translation' section on the WhiteRIP website for further details. Also, make sure to accept the terms of use at this stage.



Installation Directory:

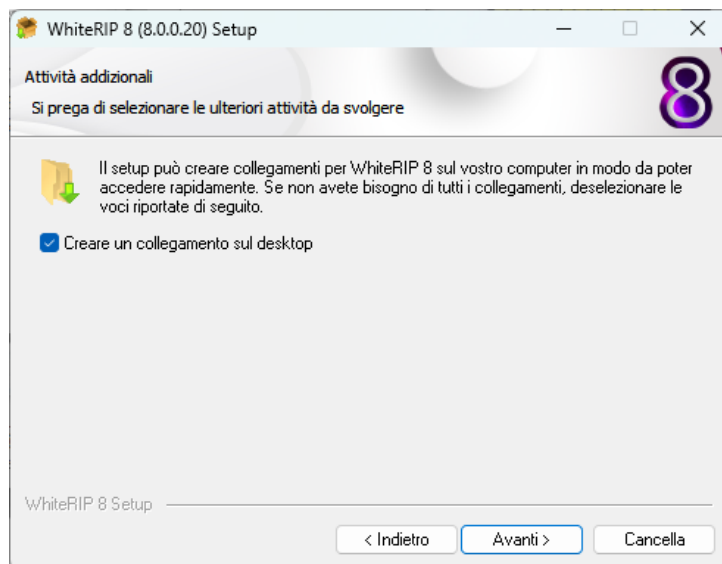
Now it's time to specify the directory where you want WhiteRIP to be installed on your computer.

Typically, the default directory, which is C:\Program Files\WhiteRIP 8, is recommended. Proceed with the installation once you've made this choice.



Desktop Shortcut:

If you prefer to have a direct shortcut on your desktop for easy access to WhiteRIP, select the corresponding option during the installation.

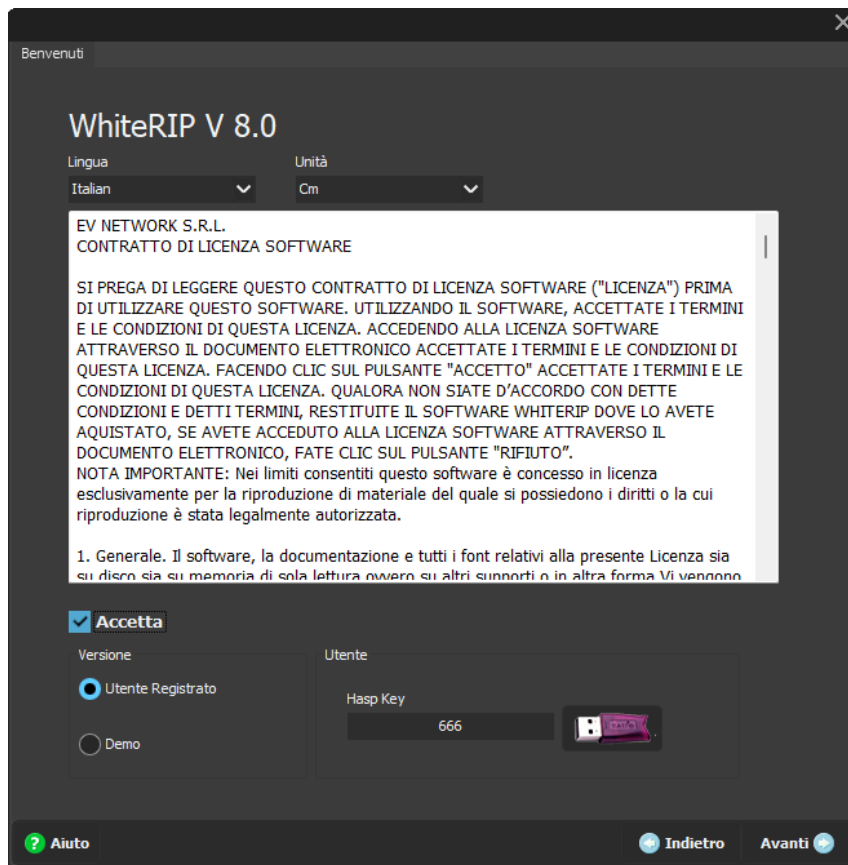


After this step, carefully follow the instructions provided by the installation program and wait for the process to complete.

Initial Configuration:

After completing the installation, locate the WhiteRIP icon on your desktop and double-click to launch the program.

Next, once again, accept the terms of use, select your preferred language, and choose your preferred unit of measurement.



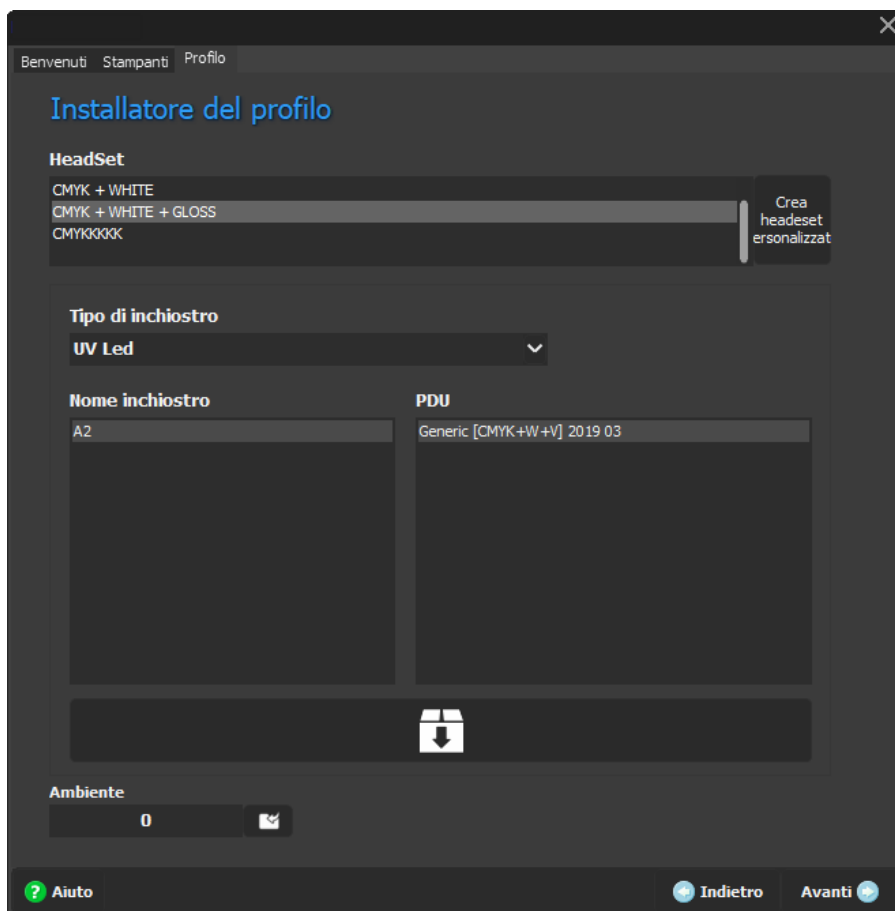
At this stage, it is important to ensure that the number displayed on the HASP key matches the one indicated

Printer Selection:

From the list of available options, select the correct printer based on your needs. Also, make sure to select and download the necessary drivers to ensure the proper functioning of the printer. It's important to note that printers marked with an asterisk (*) are compatible with your system.

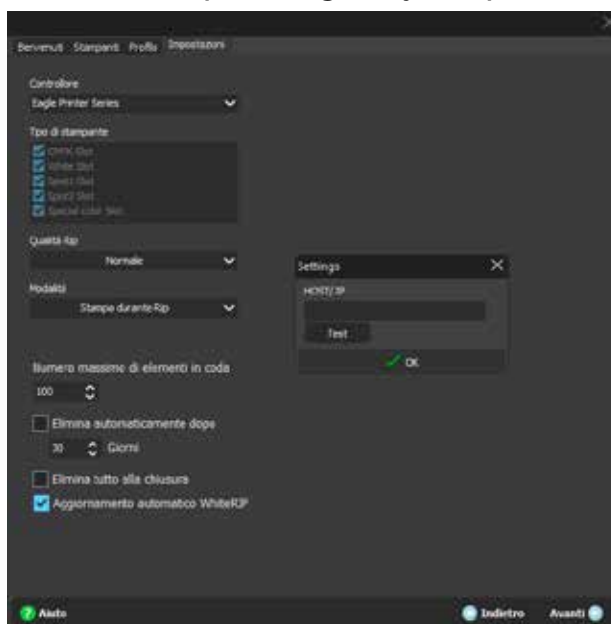
Color Profile Selection:

After completing the driver download, proceed with the selection of the appropriate color profile and download it into the system to achieve accurate printing results.

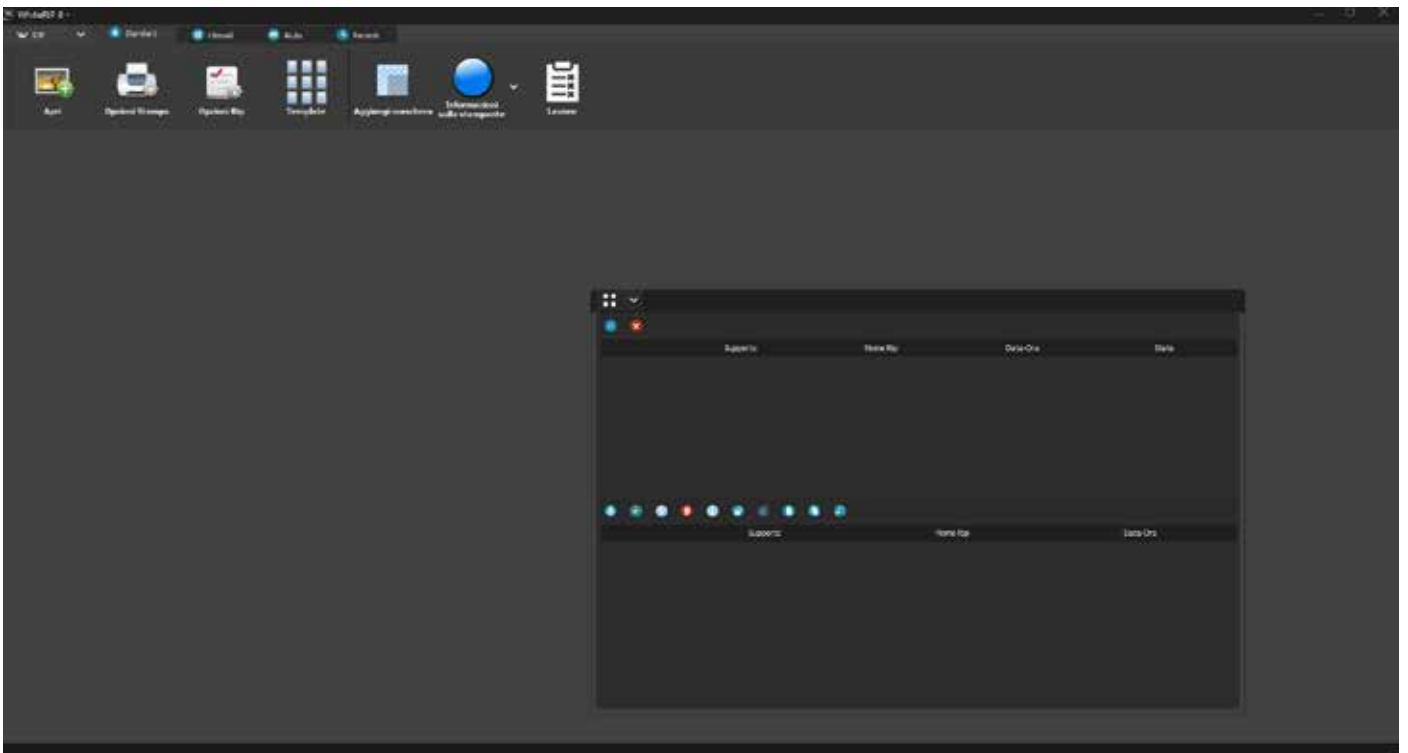


Connecting to the Printer:

To establish an effective connection between WhiteRIP and your printer, select the connection mode via USB or IP, depending on your printer's specifications.



Finally, follow the remaining instructions until the WhiteRIP configuration process is completed.



Now, successfully, you have completed the installation and configuration of WhiteRIP, and you are ready to start using the software for your printing needs!

